

AmidaCare

USE YOUR AMIDA CARE CARD FOR



PRIMARY CARE



MOST MENTAL HEALTH (WITH REFERRAL)



VISION CARE (DAVIS VISION)



WOMEN'S HEALTH & MATERNITY



HOSPITAL CARE



SPECIALTY CARE (WITH REFERRAL)

MEDICAID

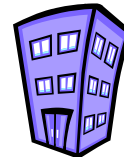
USE YOUR MEDICAID CARD FOR



THE DENTIST



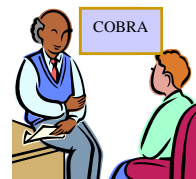
THE PHARMACY



AIDS DAY HEALTH CARE CENTER



OUTPATIENT SUBSTANCE ABUSE TREATMENT

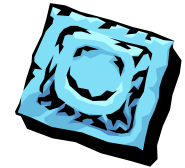


COBRA CASE MANAGEMENT

MEDICAID

AmidaCare

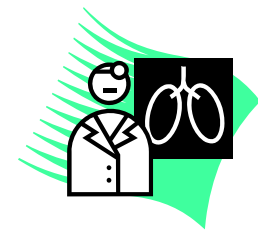
USE MEDICAID OR AMIDACARE FOR



FAMILY PLANNING



HIV COUNSELING & TESTING



TB DIAGNOSIS & TREATMENT



?? QUESTIONS??

See your **PCP, Case Manager, or Clinical Care Coordinator**

or call

1-800-556-0689