

Amida Care

USE YOUR AMIDA CARE CARD



PRIMARY CARE



MOST MENTAL HEALTH (WITH REFERRAL)



VISION CARE (DAVIS VISION)



WOMEN'S HEALTH & MATERNITY



HOSPITAL CARE



SPECIALTY CARE (WITH REFERRAL)

MEDICAID

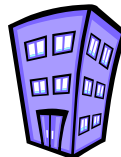
USE YOUR MEDICAID CARD



THE DENTIST



THE PHARMACY



AIDS DAY HEALTH CARE CENTER



OUTPATIENT SUBSTANCE ABUSE TREATMENT

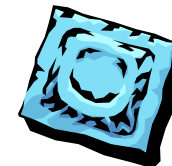


COBRA CASE MANAGEMENT

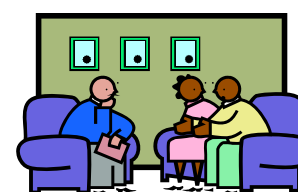
MEDI-

Amida Care

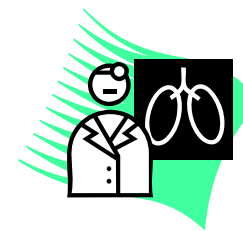
USE MEDICAID OR AMIDA CARE



FAMILY PLANNING



HIV COUNSELING & TESTING



TB DIAGNOSIS & TREATMENT



?? QUESTIONS??

See your **PCP, Case Manager, or Clinical Care Coordinator**
or call

1-800-556-0689