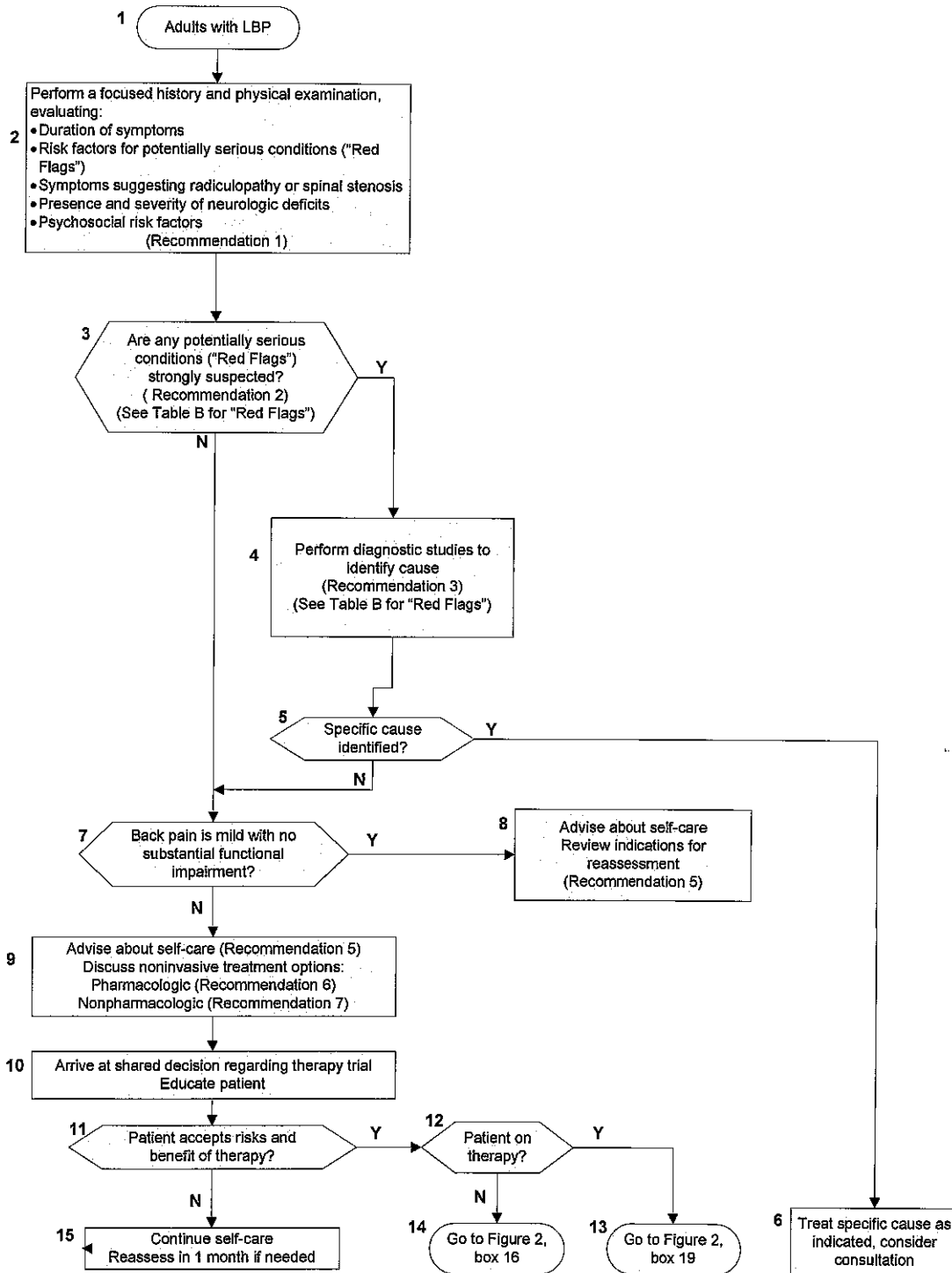


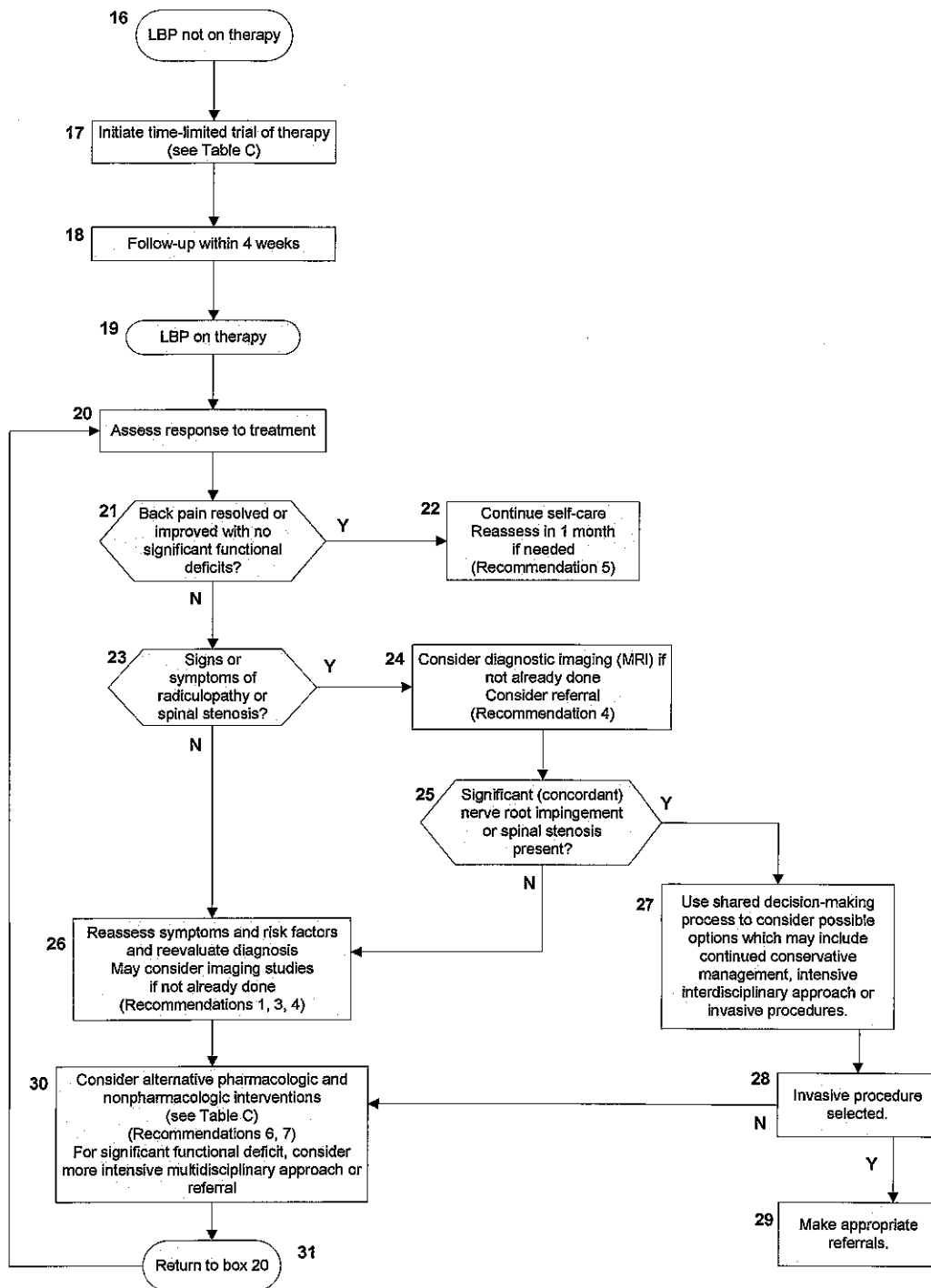
Figure 1. Initial evaluation & management of low back pain (LBP).



This algorithm should not be used for back pain associated with major trauma, nonspinal back pain, or back pain due to systemic illness.

Extracted and modified from Chou R, Qaseem A, Snow V, et al: *Diagnosis and Treatment of Low Back Pain: A Joint Clinical Practice Guideline from the American College of Physicians and the American Pain Society.* *Ann Intern Med.* 2007;147:478-491.

Figure 2. Management of low back pain (LBP).



Extracted and modified from Chou R, Qaseem A, Snow V, et al: *Diagnosis and Treatment of Low Back Pain: A Joint Clinical Practice Guideline from the American College of Physicians and the American Pain Society.* Ann Intern Med. 2007;147:478-491.